

HANDHELD THERMAL IMAGING



XS-LRF SERIES INSTRUCTION MANUAL

Shenzhen Shi Yutong Technology Co., LTD



1、Lens Cover	2、Lens Focusing Ring	3、Power ON/OFF Button
4、Navigation UP Button	5、MENU Button	6、Navigation DOWN Button
7、LED Indicator (GREEN = Power On, RED = Charging)	8、Eyepiece Focusing Ring	9、Red Laser Pointer
10、Laser Rangefinder	11、Data Compartment	12、Hand Strap
13、Objective Lens	14、Eyepiece Lens	15、Battery Cap

In The Box

- XS-LRF HANDHELD THERMAL IMAGING
- Type-C Cable
- Manual
- 18650 Lithium Battery
- 5V2A Adapter
- Hand Strap

Quick Start

Power On and Image Settings

- Hold the power (ON/OFF) button (3) for 3 seconds to power on.
- Rotate the eyepiece focusing ring (8) to get a clear image of the icons on the display.
- Rotate the lens focusing ring (2) to get a clear image of the observed object.
- Press the navigation UP button (4) to select the operating modes (White Hot, Black Hot, Sky Mode, Red Hot, Fusion).
- Press the navigation DOWN button (6) to select digital magnification (1x, 2x, 4x, 8x).
- Press the MENU button (5) to enter the menu to select the appropriate parameter.
- Hold the power (ON/OFF) button (3) for 3 seconds to power off. The LED indicator will be turned off after the device is powered off.

Button



Power (ON/OFF) Button

Hold the power (ON/OFF) button (3) for 3 seconds to power off. The LED indicator will be turned off after power off.

Hold the power (ON/OFF) button (3) for 1-2 seconds to go into sleep mode. The LED indicator will be green when the device is in sleep mode. Wake the device by pressing the power (ON/OFF) button.

**Press the power button to refresh the device.*



↑ Navigation UP button

In menu mode:

Press to switch menu items upwards.

When not in menu mode:

Press to change the operating modes.

Hold 1~3s to take a picture ; Hold 3s to start/stop recording



MENU Button

In menu mode:

Press to confirm selection.

Hold to exit main menu or submenu.

When not in menu mode:

Press to enter menu mode.

Hold to turn on or off the red laser pointer.



↓ Navigation DOWN Button

In menu mode:

Press to switch menu items downwards.

When not in menu mode:

Press to change set-up zoom 1x,2x,4x,8x

Hold to turn on/off rangefinder

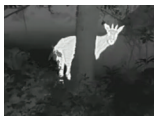
Menu Function

XS-LRF Detailed Functions

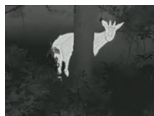
1. Operating Modes

Options: "White Hot"/"Sky Mode"/"Black Hot"/"Red Hot"/"Fusion"

Default mode is "White Hot"



White Hot



Sky Mode



Black Hot



Red Hot



Fusion

2. Video Output

Options: "On"/"Off"

The video output function CVBS will be on/off accordingly.

3. WiFi

Options: "On"/"Off"

Turn on WiFi on both the device's Menu and user's phone.

On user's phone, find and connect to "APPshow-XSLRF-XXX" WiFi network with password 12345678.

Live image will be displayed on the App after the phone is connected to the device's WiFi.

4. Laser Rangefinder Unit

Options: "Meter"/"Yard"

5. Laser Rangefinder Mode

- 1.Single distance measurement
- 2.Continuous distance measurement

6. OLED Brightness

Select "OLED Brightness" in the main menu, press MENU button to set the screen brightness from "Super Dark"/"Dark"/"Normal"/"Bright"/"Super Bright". The default mode is "Normal".

7. Target Brightness

Find the "Target Brightness" in the main menu. Press MENU button to choose from the 5 brightness levels (1-5).

8. Contrast Ratio

Press the MENU button to enter the main menu and select "Contrast Ratio". There are 10 options (1-10).

9. Image Detail Boost

Press the MENU button to enter the main menu and select the "Image Detail Boost" function. Image resolution will vary according to each option. Press MENU button to choose your option. there are 5 options (1-5)

10. Date/Time

Move the options by pressing the MENU button. Change the value using the UP/DOWN button. Confirm the values by pressing the MENU button. Quit by holding the MENU button.

11. Language

Enter the language menu setting. Save the settings by pressing the MENU button.

12. Record Audio

Select "Record Audio" and press MENU button. Select "On"/"Off".

13. Format

Select "Format" under main menu, press the MENU button to format the memory storage in the device.
Attention! Data cannot be recovered after formatting!

14. Auto Power Off

Select "Auto Power Off" under main menu, short press MENU button to set the mode between "3 Min", "5 Min" and "Off".
The default mode is "Off".

15. Default Setting

Find default settings under main menu, short press MENU button to enter the submenu.
Select "Confirm" to save the default settings. Attention ! Factory default settings will be saved after confirmation.

16. Pixel Cure

Select "Pixel Cure" and press MENU button to get to the submenu. The lens should be covered with lens cover before performing the pixel cure. Press the MENU button and follow the prompts to fix the bad pixels. After repair, please remember to save it.

Hold the UP/DOWN button to move X/Y position. Press the Power button to switch between X/Y/Save.

17. Image Adjustment

Options: "Cancel"/"Confirm"

Select "Image Adjustment" in the main menu. Press MENU button to select "Confirm" and cover the lens if the image adjustment is required.

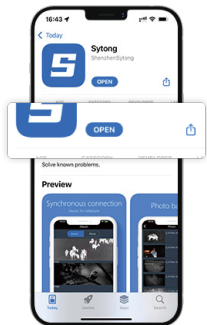
18. Version

Select "Version" to view the device's software version.

APP Connection



Download APP by scanning the QR code using the phone's camera app.



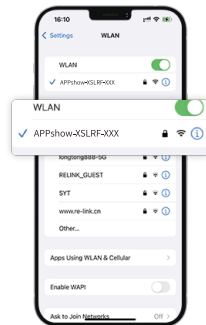
Download the APP



Turn on WiFi on device and phone



Enter APP



Choose WiFi "APPshow..." to connect WiFi
(Password: **12345678**)

XS03-LRF

Sensor

Type	Uncooled	Resolution	384x288 Super Sensitive
Frame Rate	50 Hz	Pixel Size	12μm
NETD	≤18mk		

Optical Characteristics

Objective Lens	15/19/25/35mm, F/1.0	Magnification	1.2x/1.5x/2.0x/2.8x
Digital Zoom	1x / 2x / 4 x/ 8x	Eye Relief	30 mm
Dioptr Adjustment	+5/-5 D	Focus Scope Range	5m-∞
FOV	17.5°X13.1° / 13.8°X10.4° / 10.5°X7.9° / 7.5°X5.7°	Detection Distance (Target Size : 1.7m x 0.5m)	750m/955m/1250m/1750m

Display

Operating Mode	White Hot , Sky Mode , Black Hot ,Red Hot , Fusion	Type / Resolution	0.39 inch / OLED / 1024X768
----------------	---	-------------------	-----------------------------

Operational Characteristics

Power Supply	3-4.2 V	Waterproof Rating	IP66
--------------	---------	-------------------	------

External Power Supply	5V (USB)	Battery	18650 /3500mAh
Operating Temperature	- 20°C to + 50°C	Dimensions	156X68X75mm
Weight(Without Battery /Mount)	15mm : 435g / 19mm : 440g 25mm : 452g / 35mm : 467g	Operating Time (At Temperature Of 22°C)	5 hours

Video Recorder

Video / Photo resolution	1024x768	Video / Photo Format	.mp4 / .jpg
Memory Type	Built-in 32G Memory Card		

Wifi Channel

Frequency	2.4GHz	Standard	802.11 b/g
WiFi Signal Range	15m		

Rangefinder

Wavelength	905nm	Max. Measuring Range	1000m
Measuring Accuracy	+/- 1m		

XS06-LRF

Sensor

Type	Uncooled	Resolution	640x512 Super Sensitive
Frame Rate	50 Hz	Pixel Size	12μm
NETD	≤18mk		

Optical Characteristics

Objective Lens	19/25/35mm, F/1.0	Magnification	0.9x/1.2x/1.7x
Digital Zoom	1x / 2x / 4 x/ 8x	Eye Relief	30 mm
Dioptre Adjustment	+5/-5 D	Focus Scope Range	5m-∞
FOV	22.9°X18.4° / 17.5°X13.1° / 12.5°X9.4°	Detection Distance (Target Size : 1.7m x 0.5m)	955m/1250m/1750m

Display

Operating Mode	White Hot , Sky Mode , Black Hot ,Red Hot , Fusion	Type / Resolution	0.39 inch / OLED / 1024X768
----------------	---	-------------------	-----------------------------

Operational Characteristics

Power Supply	3-4.2 V	Waterproof Rating	IP66
--------------	---------	-------------------	------

External Power Supply	5V (USB)	Battery	18650 /3500mAh
Operating Temperature	-20°C to + 50°C	Dimensions	156X68X75mm
Weight(Without Battery /Mount)	19mm:440g / 25mm:452g 35mm:467g	Operating Time (At Temperature Of 22°C)	5 hours

Video Recorder

Video / Photo resolution	1024x768	Video / Photo Format	.mp4 / .jpg
Memory Type	Built-in 32G Memory Card		

Wifi Channel

Frequency	2.4GHz	Standard	802.11 b/g
WiFi Signal Range	15m		

Rangefinder

Wavelength	905nm	Max. Measuring Range	1000m
Measuring Accuracy	+/- 1m		

| Notice!

Operating Instructions For Accessories

Power Adapter

Charging only available with the voltage equal or below 5V/2A

Red Laser Pointer Adjustment

Hold the MENU button to turn on/off the red laser pointer. Adjust the position of the red laser pointer by using an inner hexagon wrench.

Connect to a Computer

Turn off the device and connect to the computer with a Type-C cable. Hold the power button to turn on the device. The computer will read the memory card of the device.



Sytong



Sytong



Sytongnightvision



Sytong Night Vision



NSytong



support@sytong2013.com



<https://www.sytong2013.com>