

THERMAL IMAGING

THERMAL IMAGING CAMERA



GS SERIES INSTRUCTION MANUAL

Shenzhen Shi Yutong Technology Co., LTD



1、Objective Lens	2、Lens Focusing Ring	3、Lanyard
4、Power ON/OFF Button	5、LED Indicator (GREEN = POWER On, Red = Charging)	6、Record Button (REC)
7、Navigation UP Button	8、MENU Button	9、Navigation DOWN Button
10、Eyepiece Focusing Ring	11、Laser Rangefinder	12、Red Laser Pointer
13、Eyeshade	14、Storage Card Compartment	15、Charging Port/TV Out

In The Box

- Manual
- GS Handheld Thermal Scope
- Type-C Cable
- 5V 2A Adapter
- Handbag
- Shoulder Strap

Quick Start

Power On and Image Settings

- Hold the power (ON/OFF) button (4) for 3 seconds to power on.
- Rotate the eyepiece focusing ring (10) to get a clear image of the icons on the display.
- Rotate the lens focusing ring (2) to get a clear image of the observed object.
- Press the navigation UP button (7) to select the operating modes (White Hot, Defog, Black Hot, Red Hot, Fusion).
- Press the navigation DOWN button (9) to select digital magnification (1x, 2x, 4x, 6x, 8x).
- Press the MENU button (8) to enter the menu to select the appropriate parameter.
- Hold the power (ON/OFF) button (4) for 3 seconds to power off. The LED indicator will be turned off after the device is powered off.

Button



Power (ON/OFF) Button

Hold the power (ON/OFF) button (4) for 3 seconds to power off. The LED indicator will be turned off after power off. Hold the power (ON/OFF) button (4) for 1-2 seconds to go into sleep mode. The LED indicator will be green when the device is in sleep mode. Wake the device by pressing the power (ON/OFF) button.

*Press the power button to refresh the device.



Record Button (REC)

Press: Take a picture.

Hold for 3 seconds: Record a video.

Note: Please turn on the camera in the menu before taking pictures or recording.



↑ Navigation UP Button

In menu mode:

Press to switch menu items upwards.

When not in menu mode:

Press to change operating mode.



MENU Button

In menu mode:

Press to confirm selection.

Hold to exit main menu or submenu.

When not in menu mode:

Press to enter menu mode.

Hold to turn on or off the red laser pointer.



↓ Navigation DOWN Button

In menu mode:

Press to switch menu items downwards.

When not in menu mode:

Press to change set-up zoom 1x, 2x, 4x, 6x, 8x.

Hold to turn on or off laser rangefinder.

Menu Function

GS Detailed Functions

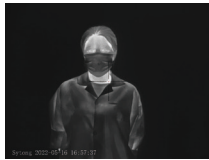
1. Operating Mode

Options: "White Hot"/"Defog"/"Black Hot"/"Red Hot"/"Fusion"

Default mode is "White Hot"



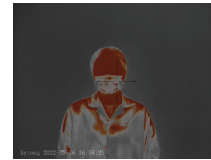
White Hot



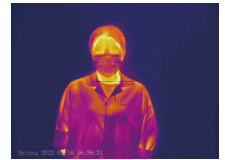
Defog



Black Hot



Red Hot



Fusion

2. Camera/Video Output

Options: "On"/"Off"

Please turn on "Camera/Video Output" to take pictures/record videos/use WiFi/external screen output.

3. WiFi

Options: "On"/"Off"

Turn on WiFi on both the device's Menu and user's phone.

On user's phone, find and connect to "Sytong Thermal" WiFi network with password 12345678.

Live image will be displayed on the App after the phone is connected to the device's WiFi.

4. Hot Tracking

Options: "On"/"Off"

5. Laser Rangefinder Unit

Options: "Meter"/"Yard"

6. Laser Rangefinder Mode

1. Single distance measurement
2. Continuous distance measurement

7. OLED Brightness

Select "OLED Brightness" in the main menu, press MENU button to set the screen brightness from "Super Dark"/"Dark"/"Normal"/"Bright"/"Super Bright". The default mode is "Normal".

8. Target Brightness

Find the "Target Brightness" in the main menu. Press MENU button to choose from the 5 brightness levels (1-5).

9. Contrast Ratio

Press the MENU button to enter the main menu and select "Contrast Ratio". There are 10 options (1-10).

10. Image Detail Boost

Press the MENU button to enter the main menu and select the "Image Detail Boost" function. Image resolution will vary according to each option. Press MENU button to choose your option. Default is 1.

11. Date/Time

Move the options by pressing the REC button. Change the value using the UP/DOWN button. Confirm the values by pressing the MENU button. Quit by holding the MENU button.

12. Language

Enter the language menu setting. Save the settings by pressing the MENU button.

13. Record Audio

Select "Record Audio" and press MENU button. Select "On"/"Off".

14. Format

Select "Format" under main menu, press the MENU button to format the memory storage in the device.
Attention! Data cannot be recovered after formatting!

15. Auto Power Off

Select "Auto Power Off" under main menu, short press MENU button to set the mode between "3 Min", "5 Min" and "Off".
The default mode is "Off".

16. Default Setting

Find default settings under main menu, short press MENU button to enter the submenu.
Select "Confirm" to save the default settings. Attention ! Factory default settings will be saved after confirmation.

17. Pixel Fix

Select "Pixel Fix" and press MENU button to get to the sub menu. The lens should be covered with lens cover before performing the pixel fix. Press the MENU button and follow the prompts to fix the bad pixels. After repair, please remember to save it.

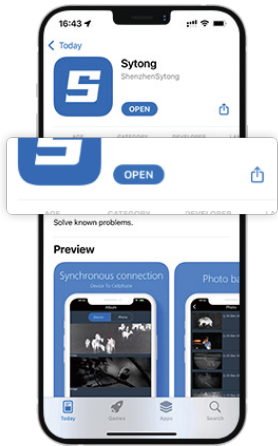
18. Version

Select "Version" to view the device's software version.

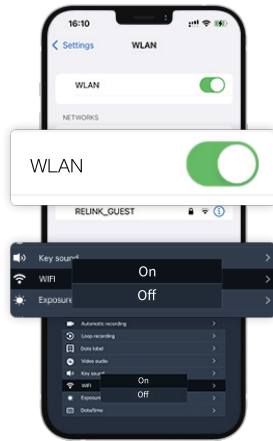
APP Connection



Download APP by scanning the QR code using the phone's camera app.



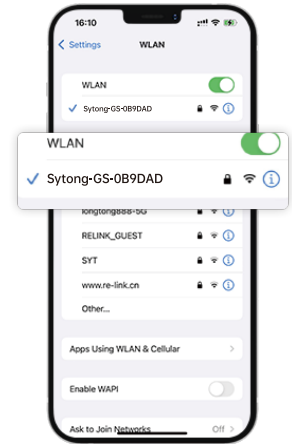
Download the APP



Turn on WiFi on device and phone



Enter APP



Choose WiFi "Sytong..." to connect WiFi
(Password: **12345678**)

GS03

GS03 Data Sheet

Sensor (Military Grade)

Type	Uncooled	Resolution	384x288 Super Sensitive
Frame rate	50 Hz	Pixel Size	12μm
NETD	≤30mK		

Optical Characteristics

Objective Lens	f15/25mm, F1.0	Magnification	1.2x/2.0x
Digital Zoom	1 x/ 2x / 4x / 6x/ 8x	Eye Relief	30 mm
Dioptre Adjustment	±5 D	Close-Up Range	5m
FOV	17.5°X13.1°/10.5°X7.9°		

Display

Operating Mode	White Hot, Defog, Black Hot, Red Hot, Fusion	Type / Resolution	0.39 inch / OLED / 1024X768
----------------	--	-------------------	-----------------------------

Operational Characteristics

Hotspot Tracking	yes	Waterproof Rating	IP65
------------------	-----	-------------------	------

Power Supply	3-4.2 V	Battery	Li-Ion Battery Pack / 6000mAh / DC 3.7V
External Power Supply	5V (USB)	Operating Time (At Temperature Of 22°C)	12 hours
Operating Temperature	- 20°C to +50°C	Dimensions	185X85X50mm
Weight	535g		

Video Recorder

Video / Photo Resolution	1024x768	Video / Photo Format	.mp4 / .jpg
Memory Type	TF card(FAT32), max.128G		

Wifi Channel

Frequency	2.4GHz	Standard	802.11 b/g
Line-Of-Sight Reception Range	15m		

Rangefinder

Wavelength	905nm	Max. Measuring Range	1000m
Measuring Accuracy	±1m		

GS06

GS06 Data Sheet

Sensor (Military Grade)

Type	Uncooled	Resolution	640x480 Super Sensitive
Frame rate	50 Hz	Pixel Size	12 μ m
NETD	\leq 30mK		

Optical Characteristics

Objective Lens	f25/35mm, F1.0/F1.2	Magnification	1.2x/1.7x
Digital Zoom	1 x/ 2x / 4x / 6x/ 8x	Eye Relief	30 mm
Diopetre Adjustment	\pm 5 D	Close-Up Range	5m
FOV	17.5°X13.1°/12.5°X9.4°		

Display

Operating Mode	White Hot, Defog, Black Hot, Red Hot, Fusion	Type / Resolution	0.39 inch / OLED / 1024X768
----------------	--	-------------------	-----------------------------

Operational Characteristics

Hotspot Tracking	yes	Waterproof Rating	IP65
------------------	-----	-------------------	------

Power Supply	3-4.2 V	Battery	Li-Ion Battery Pack / 6000mAh / DC 3.7V
External Power Supply	5V (USB)	Operating Time (At Temperature Of 22°C)	12 hours
Operating Temperature	- 20°C to +50°C	Dimensions	185X85X50mm
Weight	535g		

Video recorder

Video / Photo Resolution	1024x768	Video / Photo Format	.mp4 / .jpg
Memory Type	TF card(FAT32), max.128G		

Wifi Channel

Frequency	2.4GHz	Standard	802.11 b/g
Line-of-sight reception range	15m		

Rangefinder

Wavelength	905nm	Max. Measuring Range	1000m
Measuring Accuracy	±1m		

Notice!

Operating Instructions For Accessories

Power Adapter

Used only to charge batteries equal to or below 5V/2A.

Red Laser Pointer Adjustment

Hold the MENU button to turn on/off the red laser pointer. Adjust the position of the red laser pointer by using an inner hexagon wrench.

Micro SD Card

It is recommended to use a micro SD (FAT32 Format) card that is of Class 10 or above for smooth recording. When a new micro SD card is inserted into the device, it is recommended to format the micro SD card (see point 14). To check if the micro SD card is recognised by the device, connect the device to a power source via the USB cable. Turn on the video recording function in the menu. It is successfully in recording mode if the video label flashes. This device supports 8-128GB micro SD cards.

Note: Our products are fixed on the equipment and controlled by WiFi connected app. They can't be close to human eyes and will be damaged. They can only be used fixedly, with a distance of more than 20cm from human body.

This product can only be used in legal fields such as scientific research, observation, emergency search and it is strictly prohibited to be used on illegal purposes. Our company reserves the right to pursue legal liability of illegal users.



Follow Sytong official account to learn more
Website: <https://www.sytong2013.com>

Sytong