

# HANDHELD THERMAL IMAGING



## XS SERIES INSTRUCTION MANUAL

Shenzhen Shi Yutong Technology Co., LTD



|   |                           |                           |
|---|---------------------------|---------------------------|
| 1、Lens Cover  | 2、Objective Focusing Ring | 3、Power on/Standby Button |
| 4、Navigation UP Button                                | 5、MENU Button             | 6、Navigation DOWN Button  |
| 7、LED Indicator<br>(GREEN = POWER On, RED = Charging) | 8、Eyepiece Focusing Ring  | 9、Red Laser Pointer       |
| 10、Data Compartment                                   | 11、Hand Strap             | 12、Objective Lens         |
| 13、Eyepiece Lens                                      | 14、Battery Cap            |                           |

# | In The Box

- XS HANDHELD THERMAL IMAGING
- 18650 Lithium Battery
- Type-C Cable
- 5V2A Adapter
- Manual
- Hand Strap

# | Quick Start

## Power On and Image Settings

- Hold the power (ON/OFF) button (3) for 3 seconds to power on.
- Rotate the eyepiece focusing ring (8) to get a clear image of the icons on the display.
- Rotate the lens focusing ring (2) to get a clear image of the observed object.
- Press the navigation UP button (4) to select the operating modes (White Hot, Sky Mode, Black Hot, Red Hot, Fusion).
- Press the navigation DOWN button (6) to select digital magnification (1x, 2x, 4x, 8x).
- Press the MENU button (5) to enter the menu to select the appropriate parameter.
- Hold the power (ON/OFF) button (3) for 3 seconds to power off. The LED indicator will be turned off after the device is powered off.

# Button



## Power (ON/OFF) Button

Hold the power (ON/OFF) button (3) for 3 seconds to power off. The LED indicator will be turned off after power off.

Hold the power (ON/OFF) button (3) for 1-2 seconds to go into sleep mode. The LED indicator will be green when the device is in sleep mode. Wake the device by pressing the power (ON/OFF) button.

*\*Press the power button to refresh the device.*



## ↑ Navigation UP button

In menu mode:

Press to switch menu items upwards.

When not in menu mode:

Press to change the operating modes.

Hold to take a picture



## MENU Button

In menu mode:

Press to confirm selection.

Hold to exit main menu or submenu.

When not in menu mode:

Press to enter menu mode.

Hold to turn on or off the red laser pointer.



## ↓ Navigation DOWN Button

In menu mode:

Press to switch menu items downwards.

When not in menu mode:

Press to change set-up zoom 1x,2x,4x,8x

Hold to take a video.

# Menu Function

## XS Detailed Functions

### 1. Operating Modes

Options: "White Hot"/"Sky Mode"/"Black Hot"/"Red Hot"/"Fusion"

Default mode is "White Hot"



White Hot



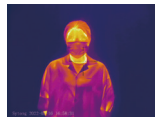
Sky Mode



Black Hot



Red Hot



Fusion

### 2. Video Output

Options: "On"/"Off"

The video output function CVBS will be on/off accordingly.

### 3. WiFi

Options: "On"/"Off"

Turn on WiFi on both the device's Menu and user's phone.

On user's phone, find and connect to "APPshow-XS-XXX" WiFi network with password 12345678.

Live image will be displayed on the App after the phone is connected to the device's WiFi.

## 4.OLED Brightness

Select "OLED Brightness" in the main menu, press MENU button to set the screen brightness from "Super Dark" / "Dark" / "Normal" / "Bright" / "Super Bright". The default mode is "Normal".

## 5.Target Brightness

Find the "Target Brightness" in the main menu. Press MENU button to choose from the 5 brightness levels (1-5).

## 6.Contrast Ratio

Press the MENU button to enter the main menu and select "Contrast Ratio". There are 10 options (1-10).

## 7.Image Detail Boost

Press the MENU button to enter the main menu and select the "Image Detail Boost" function. Image resolution will vary according to each option. Press MENU button to choose your option

## 8.Date/Time

Move the options by pressing the MENU button. Change the value using the UP/DOWN button. Confirm the values by pressing the MENU button. Quit by holding the MENU button.

## 9.Language

Enter the language menu setting. Save the settings by pressing the MENU button.

## 10.Record Audio

Select "Record Audio" and press MENU button. Select "On"/"Off".

## 11.Format

Select "Format" under main menu, press the MENU button to format the memory storage in the device.  
Attention! Data cannot be recovered after formatting!

## 12.Auto Power-Off

Select "Auto Power Off" under main menu, short press MENU button to set the mode between "3 Min", "5 Min" and "Off".  
The default mode is "Off".

## 13.Default Setting

Find default settings under main menu, short press MENU button to enter the submenu.  
Select "Confirm" to save the default settings. Attention ! Factory default settings will be saved after confirmation.

## 14.Pixel Cure

Select "Pixel Cure" and press MENU button to get to the sub menu. The lens should be covered with lens cover before performing the pixel cure. Press the MENU button and follow the prompts to fix the bad pixels. After repair, please remember to save it.

Hold the UP/DOWN button to move X/Y position. Press the Power button to switch between X/Y/Save.

## 15.Image Adjustment

Options: "Cancel"/"Confirm"

Select "Image Adjustment" in the main menu. Press MENU button to select "Confirm" and cover the lens if the image adjustment is required.

## 16.Version

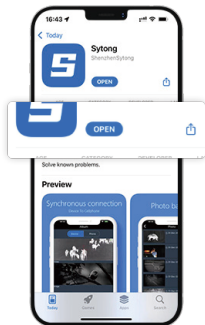
Select "Version" to view the device's software version.



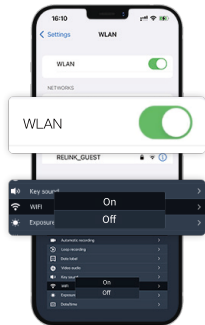
# APP Connection



Download APP by Scanning the QR code according to the mobile phone system.



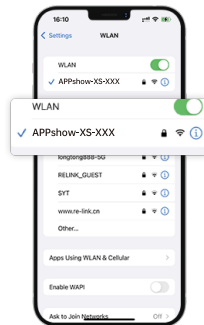
Download the APP



Turn on WiFi on XS and phone



Enter into APP



choose WiFi "APPshow ..." to connect WiFi  
(password: **12345678**)

# XS03

## XS03 Data Sheet

### Sensor

|            |          |            |                         |
|------------|----------|------------|-------------------------|
| Type       | Uncooled | Resolution | 384x288 Super Sensitive |
| Frame Rate | 50 Hz    | Pixel Size | 12µm                    |
| NETD       | <30mk    |            |                         |

### Optical Characteristics

|                   |                                      |                   |                |
|-------------------|--------------------------------------|-------------------|----------------|
| Objective Lens    | f19/25/35mm, F/1.0                   | Magnification     | 1.5x/2.0x/2.8x |
| Digital Zoom      | 1x / 2x / 4 x/ 8x                    | Eye Relief        | 30 mm          |
| Dioptr Adjustment | +5/-5 D                              | Focus scope range | 5m-∞           |
| FOV               | 13.8°X10.4° / 10.5°X7.9° / 7.5°X5.7° |                   |                |

### Display

|                |   |                   |                             |
|----------------|---|-------------------|-----------------------------|
| Operating Mode | White Hot, Black Hot, Sky Mode, Red Hot, Fusion | Type / Resolution | 0.39 inch / OLED / 1024X768 |
|----------------|---|-------------------|-----------------------------|

## Operational Characteristics

|                                |                  |   |                |
|--------------------------------|------------------|---|----------------|
| Power Supply                   | 3-4.2 V          | Waterproof Rating                       | IP66           |
| External Power Supply          | 5V (USB)         | Battery                                 | 18650 /3200mAh |
| Operating Temperature          | - 20°C to + 50°C | Dimensions                              | 156X54X75mm    |
| Weight(Without Battery /Mount) | 308g             | Operating Time (At Temperature Of 22°C) | 5 hours        |

## Video Recorder

|                          |                          |                      |             |
|--------------------------|--------------------------|----------------------|-------------|
| Video / Photo Resolution | 1024x768                 | Video / Photo Format | .mp4 / .jpg |
| Supported Memory Type    | Built-in 32G Memory Card |                      |             |

## Wifi Channel

|                   |        |  |                  |
|-------------------|--------|--|------------------|
| Frequency         | 2.4GHz | Standard                                       | 802.11 b/g       |
| WiFi Signal Range | 15m    | Detection Distance (Target Size : 1.7m x 0.5m) | 955m/1250m/1750m |

# XS06

## XS06 Data Sheet

### Sensor

|            |          |            |                         |
|------------|----------|------------|-------------------------|
| Type       | Uncooled | Resolution | 640x512 Super Sensitive |
| Frame Rate | 50 Hz    | Pixel Size | 12µm                    |
| NETD       | <25mk    |            |                         |

### Optical Characteristics

|                    |   |                   |                |
|--------------------|---|-------------------|----------------|
| Objective Lens     | f19/25/35mm, F/1.0                        | Magnification     | 0.9x/1.2x/1.7x |
| Digital Zoom       | 1x / 2x / 4 x/ 8x                         | Eye Relief        | 30 mm          |
| Dioptre Adjustment | +5/-5 D                                   | Focus scope range | 5m-∞           |
| FOV                | 22.9°X18.4° / 17.5°X13.1°<br>/ 12.5°X9.4° |                   |                |

### Display

|                |  |                   |                             |
|----------------|--|-------------------|-----------------------------|
| Operating Mode | White Hot, Black Hot,<br>Sky Mode, Red Hot, Fusion | Type / Resolution | 0.39 inch / OLED / 1024X768 |
|----------------|--|-------------------|-----------------------------|

## Operational Characteristics

|                                |                  |   |                |
|--------------------------------|------------------|---|----------------|
| Power Supply                   | 3-4.2 V          | Waterproof Rating                       | IP66           |
| External Power Supply          | 5V (USB)         | Battery                                 | 18650 /3200mAh |
| Operating Temperature          | - 20°C to + 50°C | Dimensions                              | 156X54X75mm    |
| Weight(Without Battery /Mount) | 308g             | Operating Time (At Temperature Of 22°C) | 5 hours        |

## Video Recorder

|                          |                          |                      |             |
|--------------------------|--------------------------|----------------------|-------------|
| Video / Photo Resolution | 1024x768                 | Video / Photo Format | .mp4 / .jpg |
| Supported Memory Type    | Built-in 32G Memory Card |                      |             |

## Wifi Channel

|                   |        |  |                  |
|-------------------|--------|--|------------------|
| Frequency         | 2.4GHz | Standard                                       | 802.11 b/g       |
| WiFi Signal Range | 15m    | Detection Distance (Target Size : 1.7m x 0.5m) | 955m/1250m/1750m |

# **| Notice!**

## Operating Instructions For Accessories

### **Power Adapter**

Charging only available with the voltage equal or below 5V/2A

### **Red Laser Pointer Adjustment**

Hold the MENU button to turn on/off the red laser pointer. Adjust the position of the red laser pointer by using an inner hexagon wrench.

### **Connect to a Computer**

Turn off the device and connect to the computer with a Type-C cable. Hold the power button to turn on the device. The computer will read the memory card of the device.



Follow Sytong official account to learn more  
Website: <https://www.sytong2013.com>

**Sytong**